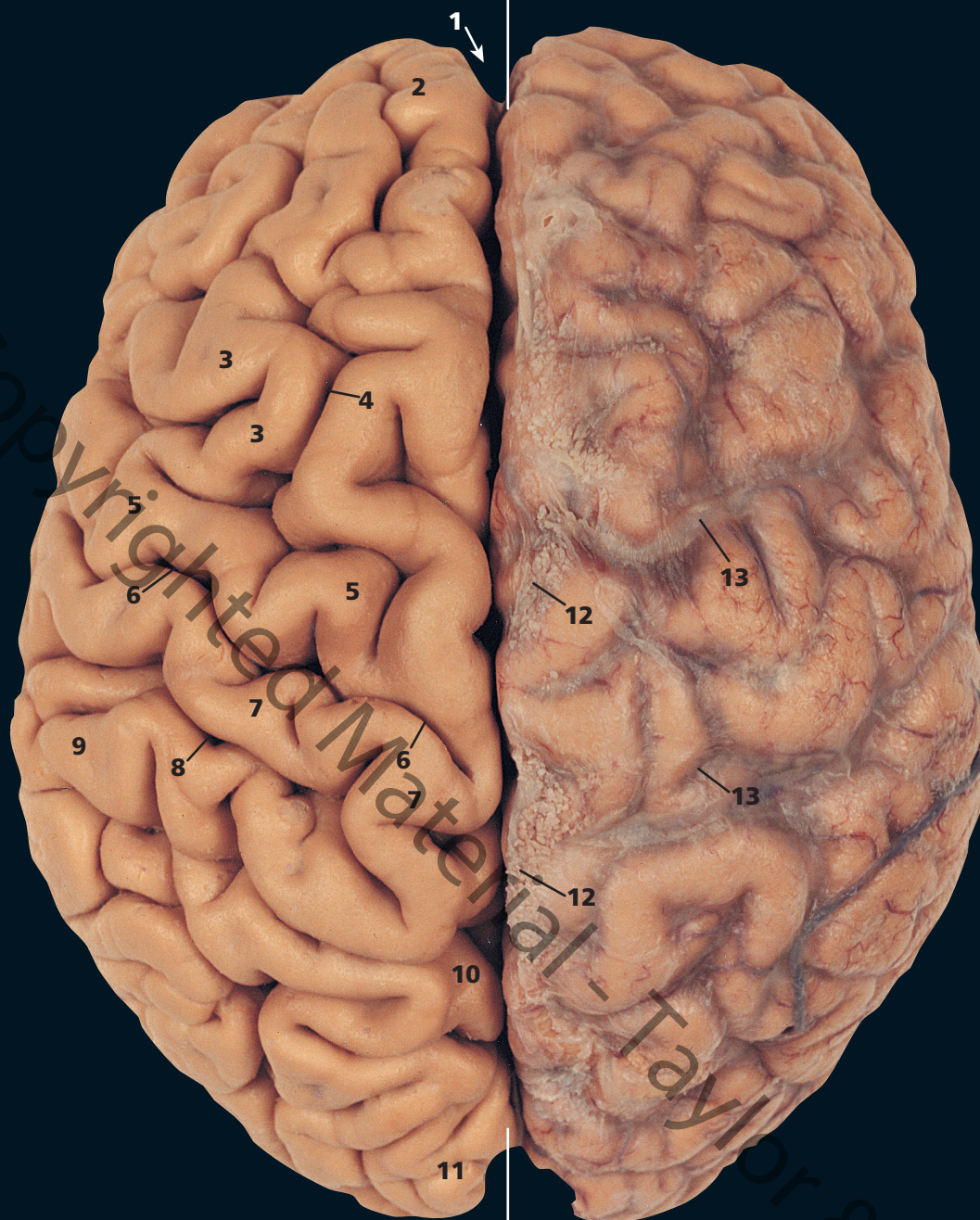


# HUMAN SECTIONAL ANATOMY

Copyrighted Material - Taylor & Francis

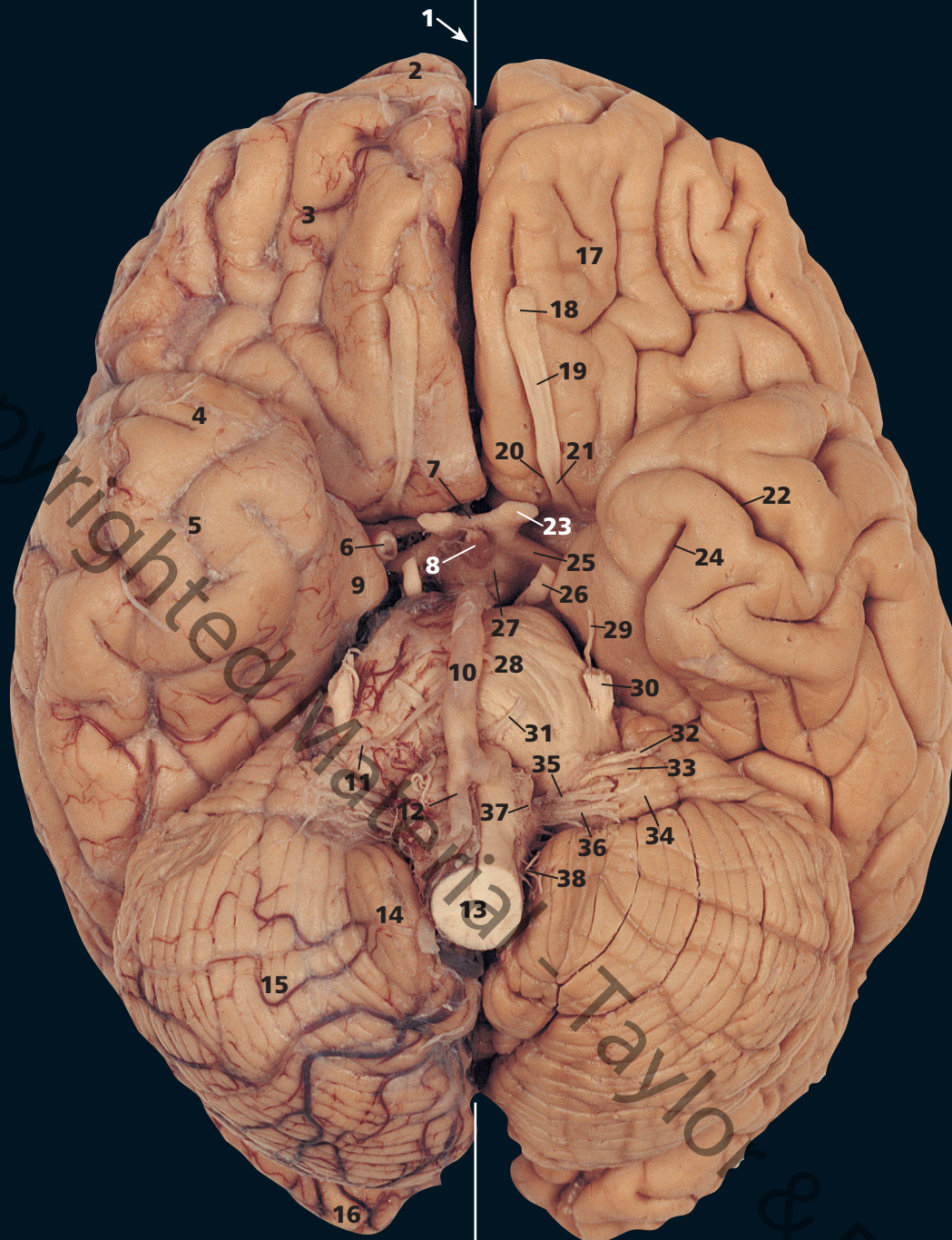


**A** Left cerebral hemisphere. From above, with the arachnoid mater and blood vessels removed

- 1 Longitudinal cerebral fissure (arrowed)
- 2 Frontal pole
- 3 Middle frontal gyrus
- 4 Superior frontal sulcus
- 5 Precentral gyrus
- 6 Central sulcus
- 7 Postcentral gyrus
- 8 Postcentral sulcus
- 9 Inferior parietal lobe
- 10 Parieto-occipital fissure
- 11 Occipital gyri

**B** Right cerebral hemisphere. From above, with the arachnoid mater and blood vessels intact

- 12 Arachnoid granulations
- 13 Superior cerebral veins

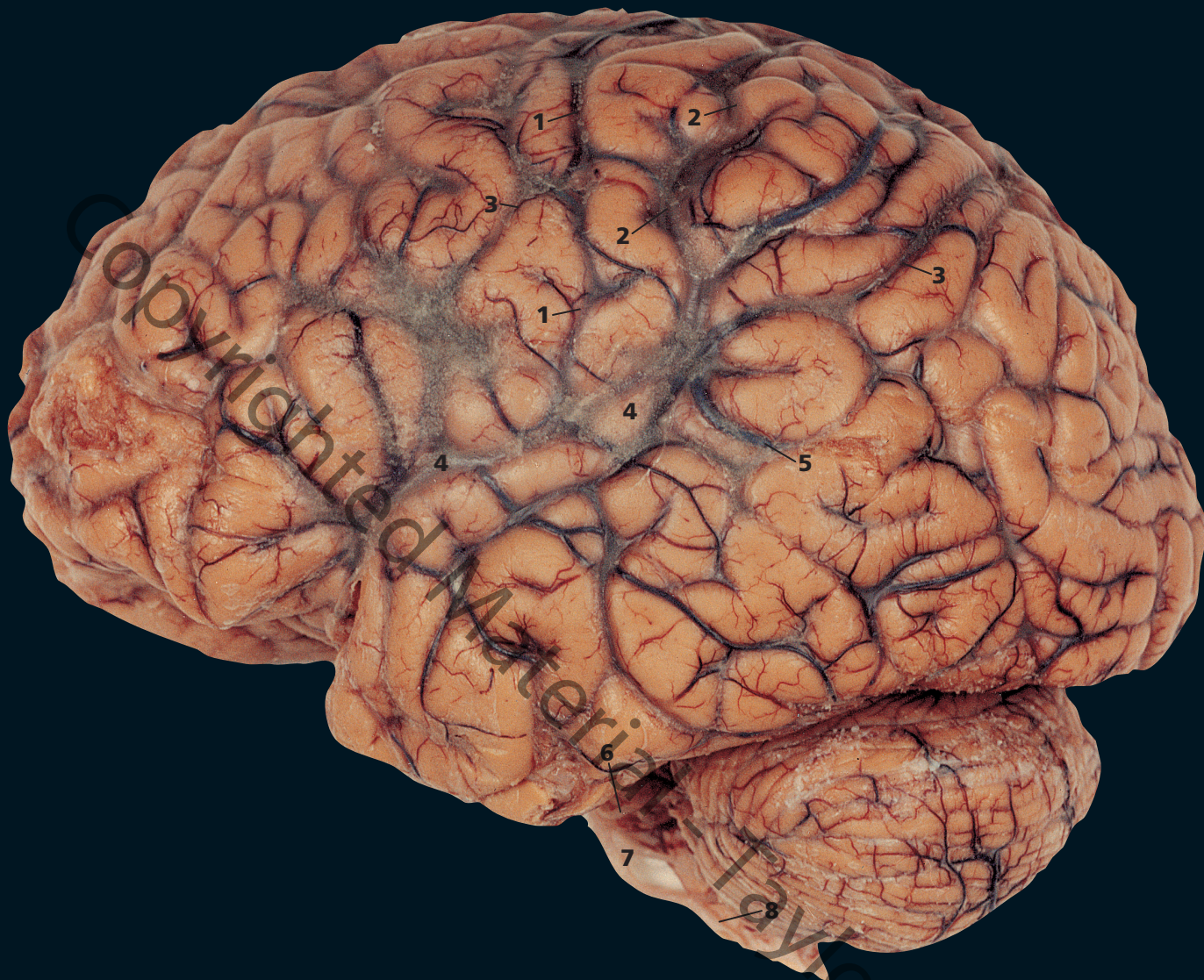


**C** Right cerebral hemisphere, cerebellum and brain stem. From below, with the arachnoid mater and blood vessels intact

- 1 Longitudinal cerebral fissure (arrowed)
- 2 Frontal pole
- 3 Inferior surface of frontal pole
- 4 Temporal pole
- 5 Inferior surface of temporal pole
- 6 Internal carotid artery
- 7 Optic chiasma
- 8 Infundibulum
- 9 Parahippocampal gyrus
- 10 Basilar artery
- 11 Labyrinthine artery
- 12 Right vertebral artery
- 13 Medulla oblongata
- 14 Tonsil of cerebellum
- 15 Cerebellar hemisphere
- 16 Occipital pole

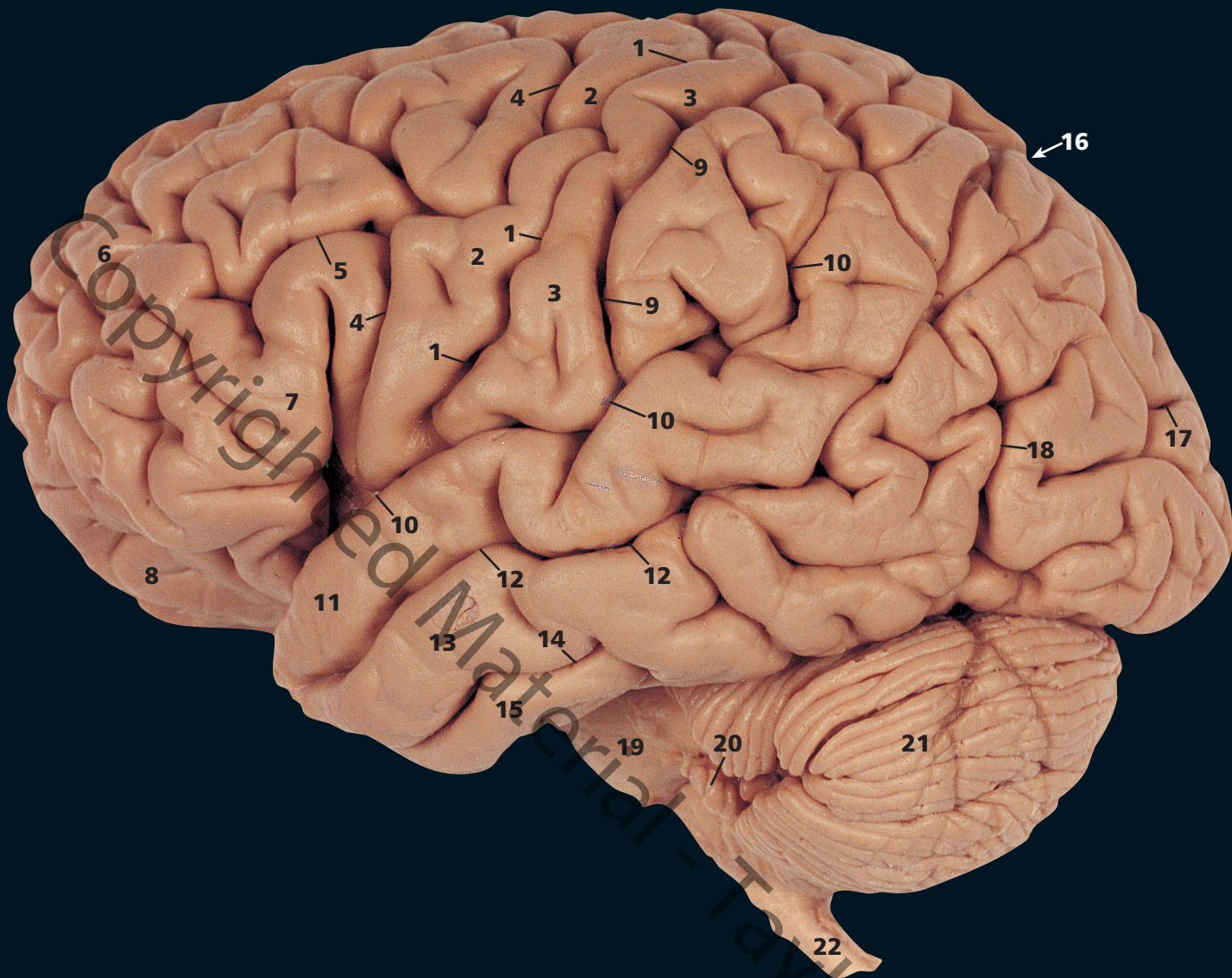
**D** Left cerebral hemisphere, cerebellum and brain stem. From below, with the arachnoid mater and blood vessels removed

- |                             |                                   |
|-----------------------------|-----------------------------------|
| 17 Orbital gyri             | 29 Trochlear nerve (IV)           |
| 18 Olfactory bulb           | 30 Trigeminal nerve (V)           |
| 19 Olfactory tract          | 31 Abducent nerve (VI)            |
| 20 Medial olfactory stria   | 32 Facial nerve (VII)             |
| 21 Lateral olfactory stria  | 33 Vestibulocochlear nerve (VIII) |
| 22 Inferior temporal sulcus | 34 Flocculus                      |
| 23 Optic nerve (II)         | 35 Glossopharyngeal nerve (IX)    |
| 24 Collateral sulcus        | 36 Vagus nerve (X)                |
| 25 Optic tract              | 37 Hypoglossal nerve (XII)        |
| 26 Oculomotor nerve (III)   | 38 Accessory nerve (XI)           |
| 27 Mamillary body           |                                   |
| 28 Pons                     |                                   |



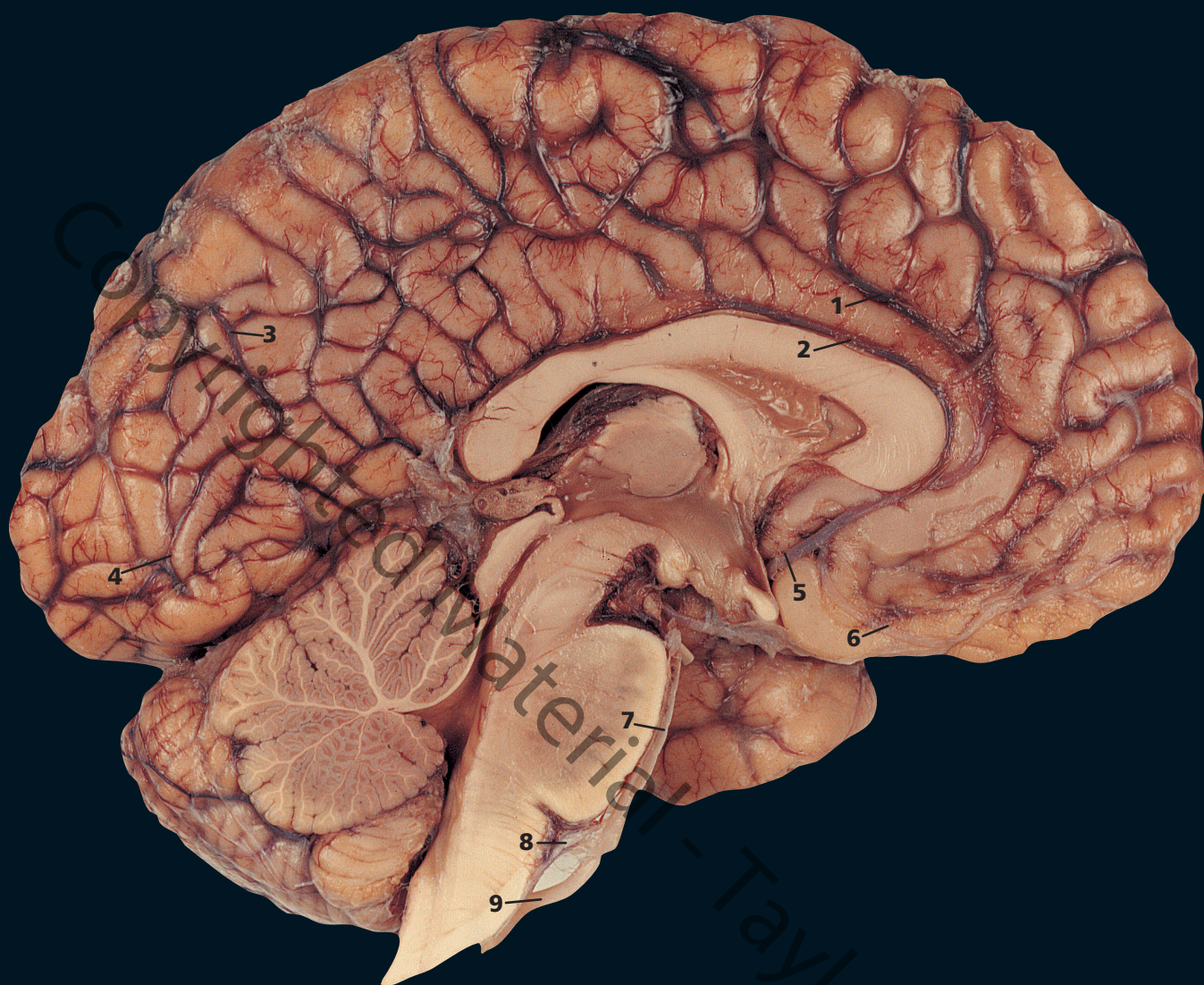
E From the left, with the arachnoid mater and blood vessels intact

- 1 Rolandic artery (in central sulcus)
- 2 Superior anastomotic vein (Trolard's)
- 3 Superior cerebral veins
- 4 Lateral fissure
- 5 Inferior anastomotic vein (Labbé)
- 6 Superior cerebellar artery
- 7 Basilar artery
- 8 Vertebral artery



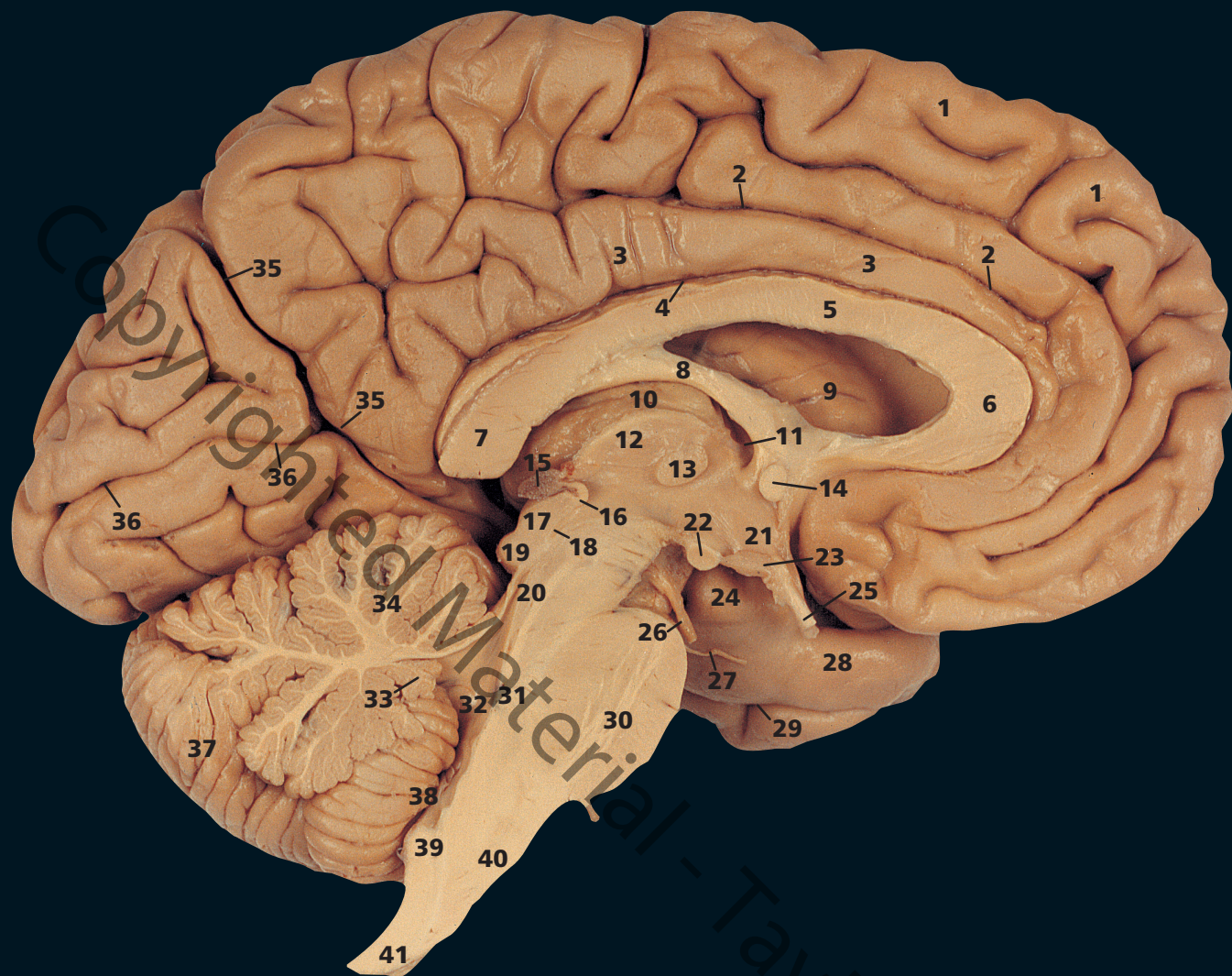
F From the left, with the arachnoid mater and blood vessels removed

- |                            |  |
|----------------------------|--|
| 1 Central sulcus           | 12 Superior temporal sulcus            |
| 2 Precentral gyrus         | 13 Middle temporal gyrus               |
| 3 Postcentral gyrus        | 14 Inferior temporal sulcus            |
| 4 Precentral sulcus        | 15 Inferior temporal gyrus             |
| 5 Inferior frontal sulcus  | 16 Parieto-occipital fissure (arrowed) |
| 6 Superior frontal gyrus   | 17 Lunate sulcus                       |
| 7 Inferior frontal gyrus   | 18 Anterior occipital sulcus           |
| 8 Orbital gyri             | 19 Pons                                |
| 9 Postcentral sulcus       | 20 Flocculus                           |
| 10 Lateral fissure         | 21 Cerebellar hemisphere               |
| 11 Superior temporal gyrus | 22 Medulla oblongata                   |



**G** Median sagittal section. The left half, from the right, with the arachnoid mater and blood vessels intact

- 1 Callosomarginal artery
- 2 Pericallosal artery
- 3 Calcarine artery
- 4 Posterior inferior cerebellar artery
- 5 Anterior cerebellar artery
- 6 Orbital artery
- 7 Basilar artery
- 8 Anterior inferior cerebellar artery
- 9 Left vertebral artery



H Median sagittal section. The left half, from the right, with the arachnoid mater and blood vessels removed

- |   |                           |                                 |
|---|---------------------------|---------------------------------|
| 1 Superior frontal gyrus                              | 14 Anterior commissure    | 29 Rhinal sulcus                |
| 2 Cingulate sulcus                                    | 15 Pineal body            | 30 Pons                         |
| 3 Cingulate gyrus                                     | 16 Posterior commissure   | 31 Pontine tegmentum            |
| 4 Callosal sulcus                                     | 17 Superior colliculus    | 32 Fourth ventricle             |
| 5 Corpus callosum – body                              | 18 Aqueduct (of Sylvius)  | 33 Nodulus                      |
| 6 Corpus callosum – genu                              | 19 Inferior colliculus    | 34 Anterior lobe of cerebellum  |
| 7 Corpus callosum – splenium                          | 20 Mesencephalon          | 35 Parieto-occipital fissure    |
| 8 Fornix  | 21 Hypothalamus           | 36 Calcarine sulcus             |
| 9 Caudate nucleus (head) in wall of lateral ventricle | 22 Mamillary body         | 37 Cerebellar hemisphere        |
| 10 Choroid plexus, third ventricle                    | 23 Infundibulum           | 38 Tonsil of cerebellum         |
| 11 Interventricular foramen (Monro)                   | 24 Uncus                  | 39 Inferior cerebellar peduncle |
| 12 Thalamus   | 25 Optic nerve (II)       | 40 Pyramid of medulla oblongata |
| 13 Massa intermedia                                   | 26 Oculomotor nerve (III) | 41 Medulla oblongata            |
|   | 27 Trochlear nerve (IV)   |                                 |
|   | 28 Parahippocampal gyrus  |                                 |